

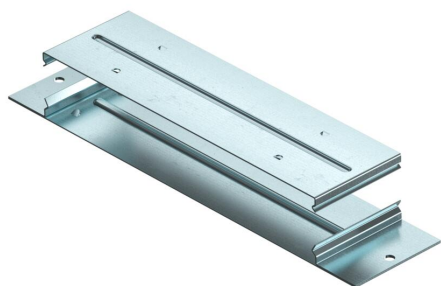
# Technical data sheet

## Connection shackle, conductive, for EÜK-2

Item number: 7400992



Connection shackle for mounting screed-covered underfloor installation ducts.  
The connection shackle snaps in to the duct sidewalls.  
The electrical conductivity is ensured via the snap-in connection.



**St** Steel

**FS** Strip galvanized

### Master data

Item number	7400992
Description 1	Connection shackle
Description 2	conductive for EÜK-2
Manufacturer	OBO
Dimension	323x75x28,2
Material	Steel
Surface	Strip galvanized
Surface standard	DIN EN 10346
Smallest sales unit	1
Unit of quantity	Piece
Weight	42.34 kg
Weight unit	kg/100 pc.

# Technical data sheet

Connection shackle, conductive, for EÜK-2

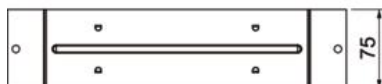
Item number: 7400992



## Dimensions



Length	323 mm
Width	75 mm
Dimension a	250 mm



## Technical data

Version for	Strap
Floor plate	yes
Seal installation option	no
Suitable for expansion joint	yes
Trunking width, min.	250 mm
Trunking height, max.	58 mm
Duct height, min.	28 mm
With equipotential bonding	yes
Removable cover	yes