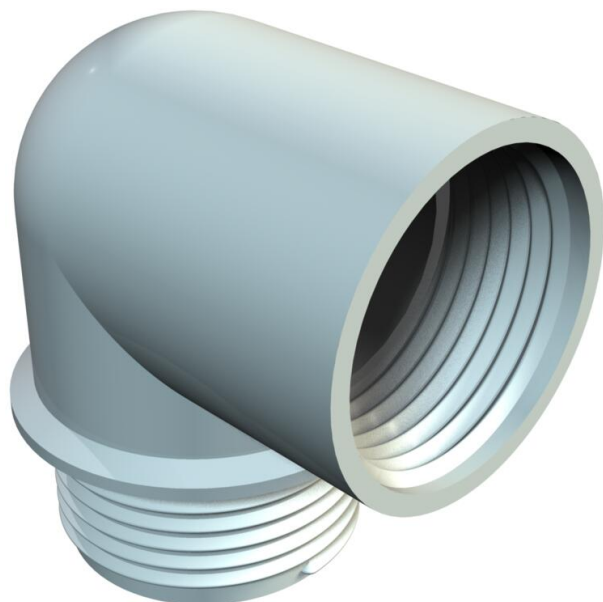


Technical data sheet

90° elbow socket, PG thread

Item number: 2029952



Elbow socket with PG internal and external thread to DIN 40430.

The elbow socket can be turned into an angular gland with two steel pressure rings 107/D, a sealing ring 107/A or 107/B and a pressure screw 107/E.



PA Polyamide

Master data

Item number	2029952
Type	107 W PG21 PA
Description 1	Elbow socket
Manufacturer	OBO
Dimension	PG21
Colour	Light grey
Material	Polyamide
Smallest sales unit	10
Unit of quantity	Units
Weight	1,47 kg
Weight unit	kg/100 pairs
CO2 Footprint (GWP) Cradle-to-Gate	0,0836 kg CO2e / 1 Piece

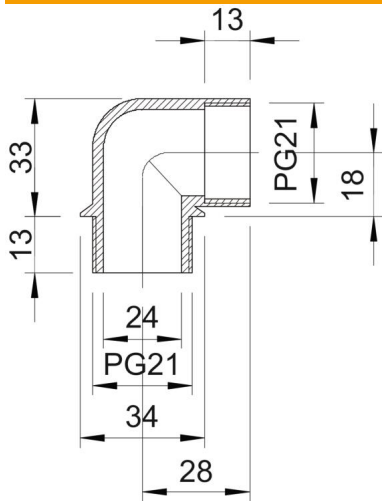
Technical data sheet

90° elbow socket, PG thread

Item number: 2029952



Dimensions



Dimension A	28 mm
Dimension B	18 mm
Dimension D1	34 mm
Dimension D2	24 mm
Dimension L1	13 mm
Dimension L2	13 mm
Dimension L3	33 mm

Technical specifications

Type	With thread
Flame-resistant	acc. to VDE 0471/DIN 695 Part 2-1, test temperature 650°C
Thread	Pg 21
Thread dimension, PG, external	21
Thread dimension, PG, internal	21
Permitted temperature range, max.	65 °C
Permitted temperature range, min.	-20 °C