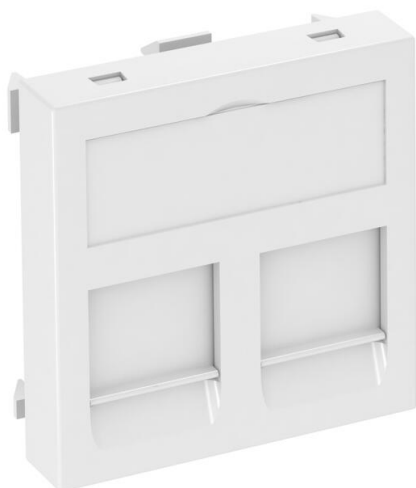


Technical data sheet

Data technology support, 1 module, straight outlet, Type C

Item number: 6119214



Data technology support with straight outlet and locking slider to accept two data technology connection modules with RJ45 socket. The locking fastening is suitable for horizontal and vertical installation in the system environment. Type C has a mounting opening of 19.30 x 14.80 mm and is designed for direct fastening of the data connection modules in the mounting opening.

The type C data technology support is suitable for accepting the following data connection modules: BTR (Keystone design): Cat. 6A module, E-DAT module and UAE module; Corning: modules with Keystone seat; Dätwyler: KS-T, MS-K and KU-T; EKV: E-Stone; Harting: Prelink Keystone Cat. 6; Leoni Kerpen: Mega-Line Keystone Cat. 6A; OBO: type ASM-C6A and ASM-C6A G; R&M: Cat. 6A with Keystone fastening; Rutenbeck: UM and UMflex; SETEC: UKJ and XKJ; Telegärtner: AMJ and UMJ.

For installation in Rapid 45 and Rapid 80 device installation trunking, ISS service poles and underfloor systems.

PC Polycarbonate

Master data

Item number	6119214
Type	DTG-2C RW1
Description 1	Data technology support
Description 2	f. 2 connection modules type C
Manufacturer	OBO
Dimension	45x45mm
Colour	Pure white; RAL 9010
Material	Polycarbonate
Smallest sales unit	1
Unit of quantity	Units
Weight	1,1 kg
Weight unit	kg/100 pairs
CO2 Footprint (GWP) Cradle-to-Gate	0,1843 kg CO2e / 1 Piece

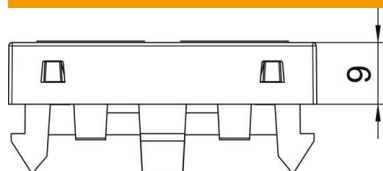
Technical data sheet

Data technology support, 1 module, straight outlet, Type C

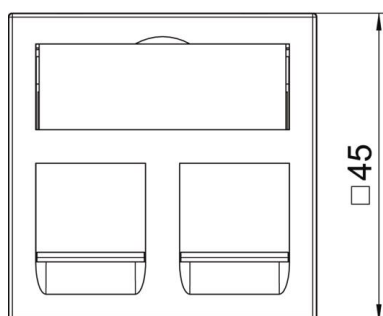
Item number: 6119214



Dimensions



Width	45 mm
Height	45 mm



Technical specifications

Number of units	1
Surface version	Matt
Fastening type	Lock
Labelling panel	With labelling panel
Halogen-free	yes
Hinged cover	no
Lamp-wire connector	no
With printed label	no
With dust protection	yes
Mounting opening	Type C
Protection rating	IP20
Depth	9 mm
Support ring	no
Transparent	no
Use	Installable data connector
Strain relief option	no
Combination	Basic element with central cover plate